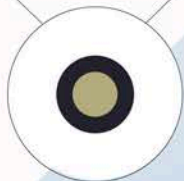
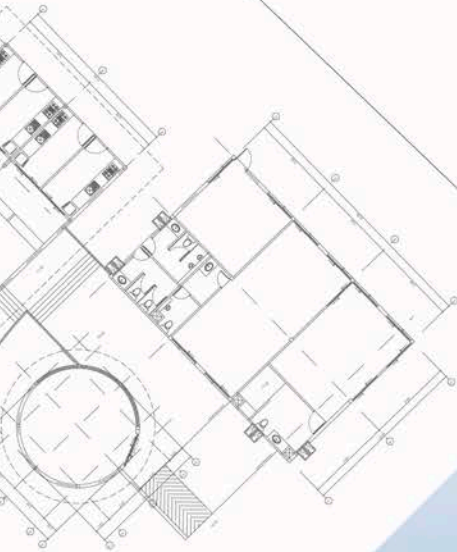




**IDSS GLOBAL**  
International Design & Software Solutions

Delivering  
**EXCELLENCE**  
in **ENGINEERING**  
**SOLUTIONS**

Architectural Services



# The Architecture Significant Challenges

Architecture engineering firms are currently facing significant challenges as they strive to meet growing demands, expand their services, and capitalize on market opportunities, all while upholding high-quality standards and sustaining revenue.

## **The Captive Model: A Time-Consuming and Costly Approach**

Historically, architecture firms have had two main options to tackle these challenges. The first option, known as the Captive Model, involves the recruitment and training of new staff, as well as the acquisition of additional office space. However, this approach is time-consuming, financially burdensome, and exposes firms to the risk of holding unprofitable assets due to market fluctuations.

## **The Outsourcing Model: A Faster & Cost-Effective Solution**

The second option is the traditional Outsourcing Model, which offers a more cost-effective and efficient implementation. Nevertheless, it often lacks process visibility and direct control, jeopardizing project schedules, adherence to standards, and the preservation of corporate culture.

## **Balanced Approach: Leveraging the Best of Both Worlds**

Fortunately, there exists a third choice that combines the advantages of both models while eliminating their drawbacks. This alternative presents a balanced approach, offering the benefits of Captive and Outsourcing without compromising process visibility, control, schedules, standards, or corporate culture.

# The Benefits of Architecture Projects

- **Increased Scalability:**  
The ability to quickly and easily scale up or down as demand changes
- **Improved Efficiency:**  
The ability to focus on core competencies and outsource non-core activities
- **Reduced Costs:**  
The ability to save on labor, office space, and other overhead costs
- **Enhanced Quality:**  
The ability to leverage the expertise of a wider pool of resources
- **Improved Risk Management:**  
The ability to mitigate the risk of market changes and other unforeseen events



**Partner with IDSS Global for a Successful Future**

# Our Services

## 2D Drafting & BIM Modeling

- Architectural Layout & Landscaping Drawings
- Architectural Floor Plan Drawings
- Space Plan Drawings
- Furniture drawings
- BIM Modeling

## 3D Modeling & Rendering

- Reflected Ceiling Plans / Drawings
- Interior Designing & Planning / Drawings
- Architectural Elevations & Sections Drawings
- Architectural 3D Modeling & Rendering

## MEP (Mechanical, Electrical & Plumbing) Drawings

- HVAC Drawings
- Electrical Drawing
- Plumbing Drawings
- Detailed Architectural Working Drawings

# Why Choose Us



Cost Effective



Reliable Team



Customer-Centric Focus



Scalability & Flexibility



24 / 7 Workflow



Increased Efficiency & Productivity

**646+**

Projects Delivered / Year

**25840+**

Hours / Year

**90+**

Satisfied Clients

## Supported Softwares:





# About IDSS GLOBAL

IDSS Global is a leading provider of outsourcing services for architecture and engineering firms. We offer a comprehensive range of services, including drafting, modeling, rendering, and project management. We have a team of experienced professionals who are committed to providing our clients with the highest quality services.

If you are an architecture or engineering firm that is looking for a way to improve your efficiency, reduce your costs, and enhance your quality, then IDSS Global is the perfect partner for you. Contact us today to learn more about how we can help you achieve your business goals.

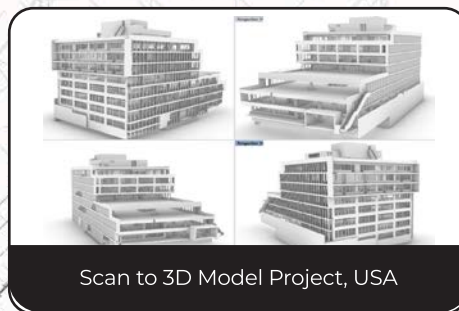
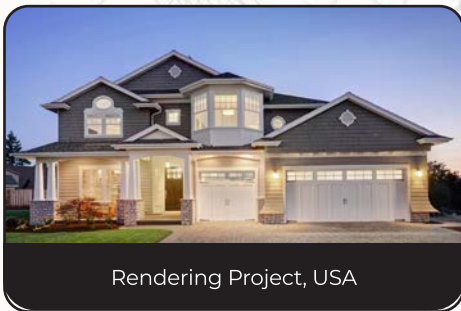
Visit our website at [www.idssglobal.com](http://www.idssglobal.com) to learn more.

## Customer Testimonial

“Working with IDSS Global was an absolute pleasure. Their team’s professionalism, clear communication, and exceptional design skills turned our vision into a reality. They delivered on time and within budget, exceeding our expectations. We couldn’t be happier with the outcome.” **John M, USA**

“Choosing IDSS Global was the best decision we made for our project. Their team’s expertise, creativity, and commitment to quality were evident in every aspect of their work. They truly understood our needs and delivered a design that perfectly captured our vision. We highly recommend them for any architectural project.” **Mathew B, Canada**

## Company Portfolio:



[CLICK HERE to VIEW MORE PROJECTS](#)

 Office No-208, GK Sapphire,  
Kokane Chowk, Pune, Maharashtra - 411017

 USA | UK | IND | + 91-99609 00134

 [info@idssglobal.com](mailto:info@idssglobal.com)

 [www.idssglobal.com](http://www.idssglobal.com)

